

1. An Tuiseal Gairmeach | The Vocative Case

Put the following names into the vocative case, as if you were speaking to someone with that name. Use a variety of the different greetings we have learned:

Beannachd leat

Sin thu

Tìoraidh

Madainn mhath

Oidhche mhath

Slàn leat

Feasgar math

Latha math

Halò

- | | | | |
|---------------|-------|---------------|-------|
| 1. Seòras: | _____ | 11. Mairead: | _____ |
| 2. Alasdair: | _____ | 12. Calum: | _____ |
| 3. Anna: | _____ | 13. Murchadh: | _____ |
| 4. Cailean: | _____ | 14. Fearchar: | _____ |
| 5. Beathag: | _____ | 15. Ealasaid: | _____ |
| 6. Mòrag: | _____ | 16. Catrìona: | _____ |
| 7. Donnchadh: | _____ | 17. Tormod: | _____ |
| 8. Eachann: | _____ | 18. Ceitidh: | _____ |
| 9. Flòraidh: | _____ | 19. Dòmhnall: | _____ |
| 10. Peigi: | _____ | 20. Eilidh: | _____ |

2. Ciamar a tha iad? | How are they?

Write sentences using the correct pronoun and an adjective to describe these people. The words in the boxes should help you:

sgìth
ceart gu leòr

brònach
trang

toilichte
feargach



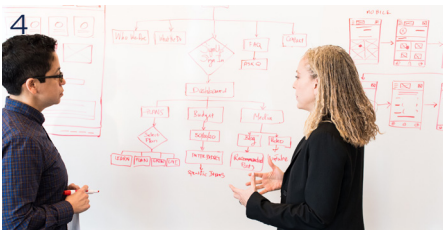
1
Tha i _____



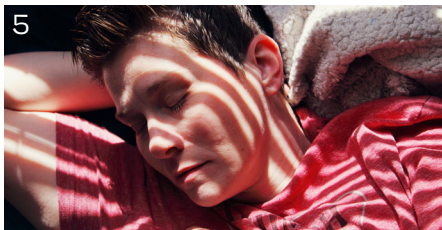
2



3



4



5



6

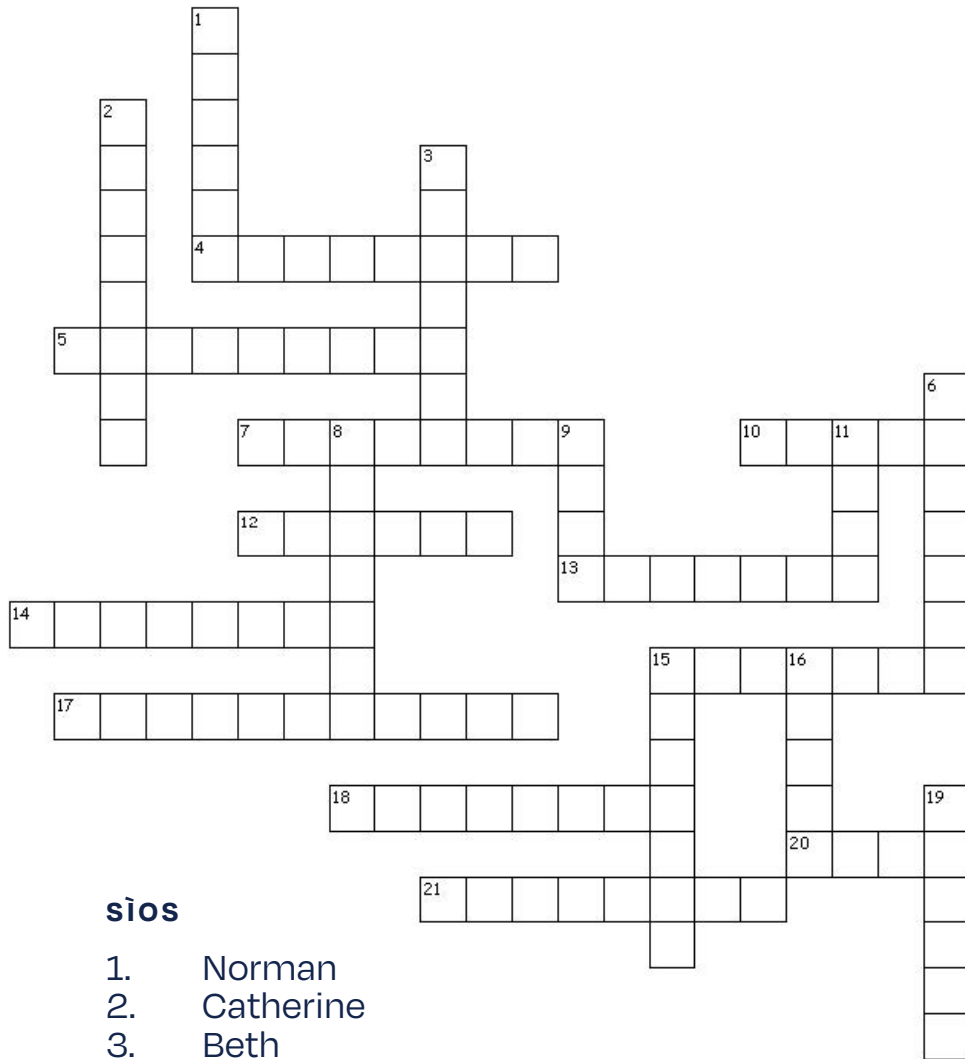
Now write questions asking how these people are above using the correct pronoun:

esan | ise | iadsan

1. Ciamar a tha _____ ?
2. _____
3. _____
4. _____
5. _____
6. _____

3. Tòimhseachan-tarsainn | Crossword

Complete the crossword below by translating the English names below into Gaelic. You may need to use a dictionary to help you with some of the translations.



TARSAINN

- 4. Donald
- 5. Kenneth
- 7. Fergus
- 10. Mary
- 12. Andrew
- 13. Hector
- 14. Flora
- 15. Katie
- 17. Archibald
- 18. Isobel
- 20. Sheila
- 21. Elizabeth

sìos

- 1. Norman
- 2. Catherine
- 3. Beth
- 6. Effie
- 8. Angus
- 9. Jane
- 11. John
- 15. Colin
- 16. Thomas
- 19. Joan

1 - An Tuiseal Gairmeach | The Vocative Case

| | | | |
|---------------|--------------------------|---------------|-------------------------|
| 1. Seòras: | Halò, a Sheòrais | 11. Mairead: | Slàn leat, a Mhairead |
| 2. Alasdair: | Latha math, Alasdair | 12. Calum: | Latha math, a Chaluim |
| 3. Anna: | Madainn mhath, Anna | 13. Murchadh: | Halò, a Mhurchaidh |
| 4. Cailean: | Feasgar math, a Chailein | 14. Fearchar: | Sin thu, Fhearchair |
| 5. Beathag: | Sin thu, a Bheathag | 15. Ealasaid: | Madainn mhath, Ealasaid |
| 6. Mòrag: | Tìoraidh, a Mhòrag | 16. Catrìona: | Tìoraidh, a Chatrìona |
| 7. Donnchadh: | Halò, a Dhonnchaidh | 17. Tormod: | Halò, a Thormoid |
| 8. Eachann: | Sin thu, Eachainn | 18. Ceitidh: | Latha math, a Cheitidh |
| 9. Flòraidh: | Latha math, a Fhlòraidh | 19. Dòmhnall: | Slàn leat, a Dhòmhnail |
| 10. Peigi: | Feasgar math, a Pheigi | 20. Eilidh: | Feasgar math, Eilidh |

2 - Ciamar a tha iad? | How are they?

EACARSAICH 1

1. Tha i ceart gu leòr.
2. Tha e feargach.
3. Tha i brònach.
4. Tha iad trang.
5. Tha e sgìth.
6. Tha i toilichte.

EACARSAICH 2

1. Ciamar a tha ise?
2. Ciamar a tha esan?
3. Ciamar a tha ise?
4. Ciamar a tha iadsan?
5. Ciamar a tha esan?
6. Ciamar a tha ise?

3 - Tòimhseachan-tarsainn | Crossword

| | | | | | |
|---------------|---|-------------|--------------|---|----------|
| 4. Donald | - | Dòmhnall | 1. Norman | - | Tormod |
| 5. Kenneth | - | Coinneach | 2. Catherine | - | Catrìona |
| 7. Fergus | - | Fearghas | 3. Beth | - | Beathag |
| 10. Mary | - | Màiri | 6. Effie | - | Oighrig |
| 12. Andrew | - | Anndra | 8. Angus | - | Aonghas |
| 13. Hector | - | Eachann | 9. Jane | - | Sìne |
| 14. Flora | - | Flòraidh | 11. John | - | Iain |
| 15. Katie | - | Ceiteag | 15. Colin | - | Cailean |
| 17. Archibald | - | Gilleasbuig | 16. Thomas | - | Tòmas |
| 18. Isobel | - | Iseabail | 19. Joan | - | Seonag |
| 20. Sheila | - | Sìle | | | |
| 21. Elizabeth | - | Ealasaid | | | |